



Take control of configuration, simplify operational workflows, increase efficiency and reduce costs with the Akamai Connector for Varnish.

Brochure

# Akamai Connector for Varnish



---

# Take control and reduce costs with the **Akamai Connector for Varnish**

---

## Challenges and solutions

### Outages and instability

Internet infrastructure is centralizing in a way that is making connectivity more fragile just when the world needs it to be more reliable. As the world's major commercial CDN providers routinely experience outages and service disruptions, companies relying on those CDNs need to secure business-critical stability and shield themselves from this unpredictability.

### Origin shield with Varnish to secure uptime and stability

Many organizations use Akamai as a CDN, and others still use Varnish at their origin and Akamai at the edge, closest to their users, for scale and availability. Whether or not a company uses Akamai on its own, or the combination of Varnish and Akamai, the need for origin shielding grows more evident as more commercial CDN outages occur. At the same time, the need for transparent and flexible cache control has never been greater.

With the Varnish and Akamai dual-layer approach to caching, companies can achieve a “best of both worlds” approach, where Varnish is used as an additional caching layer for applications at origin, helping to increase origin cacheability, performance and offload while shielding the origin from the blast radius of downtime. The Akamai layer is then used to deliver content on a global scale, achieving reach and integrated security and acceleration capabilities - particularly for mobile use cases.



## Complex configuration

Akamai is famous for its complexity, and when adding in a layer of Varnish, users who want to improve their performance in conjunction with a CDN had to tackle operational inefficiency due to the disparate caching layers. This approach can require duplicate caching rules, increasing the risk of introducing errors when changes are made. It also requires Varnish administrators to create and manage CDN-specific optimizations that may not result in best practice deployments that are applied consistently across properties. Akamai users sometimes cite inflexibility and slow responsiveness to their business needs, particularly in getting enough freedom to configure caching rules and behaviors to meet specific business goals.

## Simplify configuration and de-duplicate effort with Varnish's Akamai Connector

Varnish Software offers a solution in the Akamai Connector that provides origin shielding at the same time as providing more flexible, straightforward cache configuration options when using Varnish in conjunction with Akamai. Akamai's CDN caching isn't as flexible as some business users would like, so Varnish built the Akamai Connector as a caching control panel that you drive from Varnish using Varnish Configuration Language (VCL).

Akamai Connector for Varnish has been finely tuned to integrate tightly with the Akamai Intelligent Platform in order to help realize an easy and seamless way to use the two complementary technologies together for maximum benefit. It allows organizations to take advantage of their domain expertise in Varnish in order to leverage the scalability and performance of the Akamai platform from within the familiar Varnish Configuration Language (VCL) interface.

The Akamai Connector for Varnish can be used by organizations to automatically synchronize their local and remote Akamai configuration workflows, and ensure that the best practices of using Akamai are implemented consistently and correctly. Through the use of the Connector, caching rule changes defined at origin in VCL are communicated and synchronized with Akamai, as are purge requests, and other functionality.



# Capabilities

The Varnish for Akamai solution offers software that will allow Varnish-based servers at origin to automatically cascade select configuration changes to Akamai, creating more flexible conditions for cache control.

With the Akamai Connector for Varnish, customers can:

## Automatically create an origin shield

- Shield the origin from increasingly frequent commercial CDN service interruptions and outages with Varnish as the origin shield

## Automatically signal the effects of cache rule changes to Akamai

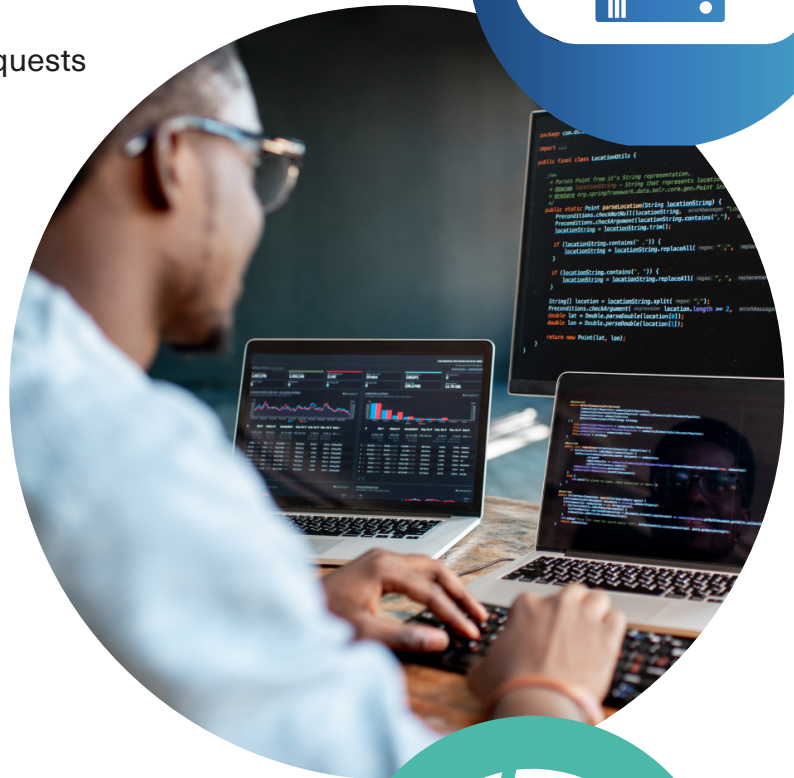
- Mark responses as cacheable, or non-cacheable
- Mark responses with downstream cacheability
- Defer ESI execution when needed
- Translate “stale-while-revalidate” requests to utilize Akamai’s Edge Control & prefetch capabilities

## Automatically synchronize purge requests with Akamai

- Create cache consistency between Varnish instance at origin and remote Akamai Edge server
- If a script or system purges the Varnish cache locally, the Connector synchronously initiates the same purge request to Akamai

## Ensure core operational elements are configured properly

- Configuration of SureRoute test object
- Ensure persistent connections are set to the proper time
- Ensure logging of TrueClient IP values is enabled





## Benefits

Akamai Connector for Varnish gives developers and operators of digital properties greater control of caching rules while running Varnish through a tight integration with Akamai:

- Protect against effects of unplanned downtime with flexible origin shielding
- Gain control over, simplify and consolidate cache configuration through Varnish
- Overcome limitations of Akamai config restrictions and implement real-time changes
- Reduce costs associated with elimination of redundant work entering configuration details in multiple systems
- Avoid errors attributable to mismatched configurations across local and Akamai environments
- Improve accuracy of configuration optimizations for core Akamai features
- Increase operational efficiency by utilizing a single interface for simplified setup, management, and optimization, including content invalidation and TTL control

Varnish offers superior flexibility that makes a deployment with Varnish at both origin and the edge together with Akamai a powerful solution.

Find out more at [www.varnish-software.com](http://www.varnish-software.com)

Find out more at [www.akamai.com](http://www.akamai.com)



efficiency





Los Angeles - Paris - London  
Stockholm - Singapore - Karlstad  
Dusseldorf - Oslo - Tokyo



 **VARNISH**  
SOFTWARE  
[www.varnish-software.com](http://www.varnish-software.com)